



INSPECTORS RETREAT 2025



LEADERSHIP
RETREATS 2025

Very Worshipful

Allan Casalou, PM

Grand Secretary

A detailed illustration of a beehive, or skep, which is a traditional dome-shaped structure made of straw or straw-like material. The beehive is the central focus, surrounded by numerous bees in various stages of flight and activity. The entire scene is framed by a wooden structure that resembles a lodge's entrance, with two large wooden doors crossed in an 'X' shape. The background is a textured, light brown color, suggesting a wall or a backdrop.

LODGE OFFICERS

BUILDING A LODGE TOGETHER

How is Freemasonry transmitted,
unimpaired, from generation to
generation?



*How is Freemasonry transmitted,
unimpaired, from generation to
generation?*

Through the presence and
effectiveness of
LODGE OFFICERS.



The background of the image is a detailed illustration on a parchment-like texture. In the center is a large, tiered beehive with a small arched entrance at the bottom. Surrounding the beehive are numerous bees in various poses. The entire scene is framed by a large, stylized compass and square, which are Masonic symbols. At the top of the compass is a circular medallion containing a five-pointed star. The text 'TRADITIONS TEACHINGS FELLOWSHIP' is overlaid on the center of the image in a large, bold, sans-serif font. The text is white with a thick yellow outline. The words are stacked vertically: 'TRADITIONS' on the top line, 'TEACHINGS' on the middle line, and 'FELLOWSHIP' on the bottom line.

TRADITIONS TEACHINGS FELLOWSHIP



Objectives

- 1. Understand the motivations behind why people seek, or avoid, lodge officer positions.**
- 2. Introduce a new tool to clarify the functions and duties of each lodge officer.**
- 3. Discuss three imperatives that will help guide your leadership into the future.**

A detailed illustration on a light-colored, textured background. In the center is a large, conical beehive made of many small, rounded cells. A small, dark, arched entrance is at the base of the beehive. Numerous bees of various sizes are depicted around the beehive, some flying and others on the cells. The beehive is framed by a large, dark, triangular shape that resembles a compass or a drafting tool. At the top of this triangle is a circular emblem containing a five-pointed star. Two long, thin, dark lines extend from the top of the triangle, crossing over the top of the beehive. The entire scene is set within a rectangular frame with a decorative, braided border.

Why are you an officer?



TOP REASONS FOR BEING A LODGE OFFICER

1. Supports the **health** of my lodge.
2. Supports the **growth** of my lodge.
3. Improves the **morale** of my lodge.



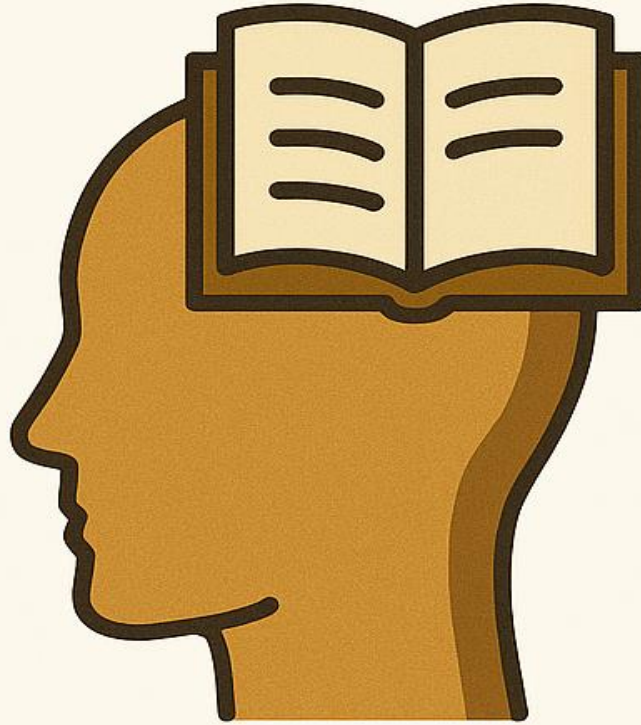
Why do
Masons **avoid**
or **give up**
lodge officer
positions?

TOP REASONS

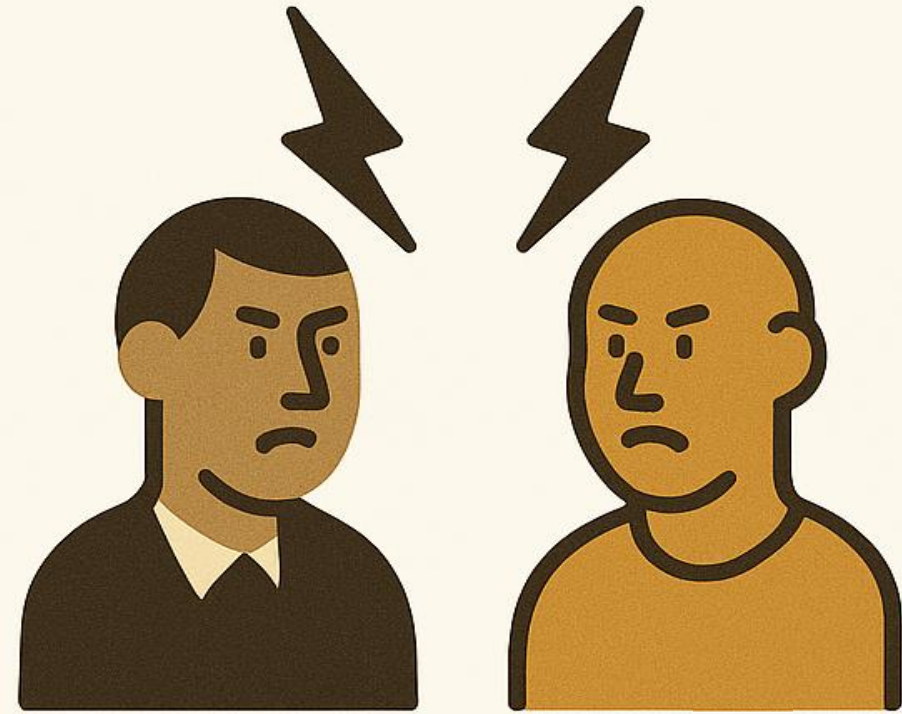
MASONS AVOID OFFICER POSITIONS



Time commitment



Memorization
required



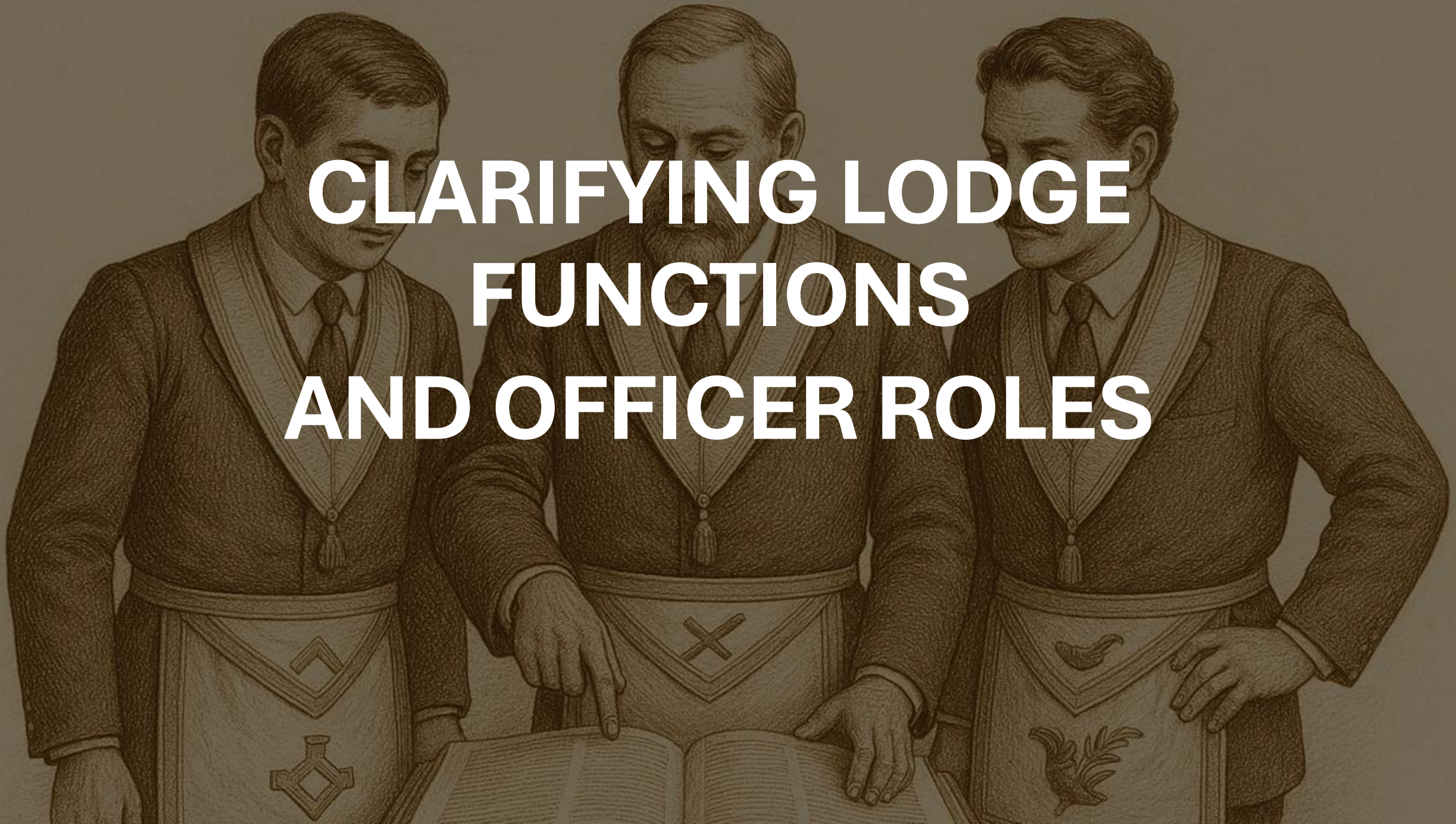
Conflicts in Lodge



HOW TO AVOID OFFICER AVOIDANCE

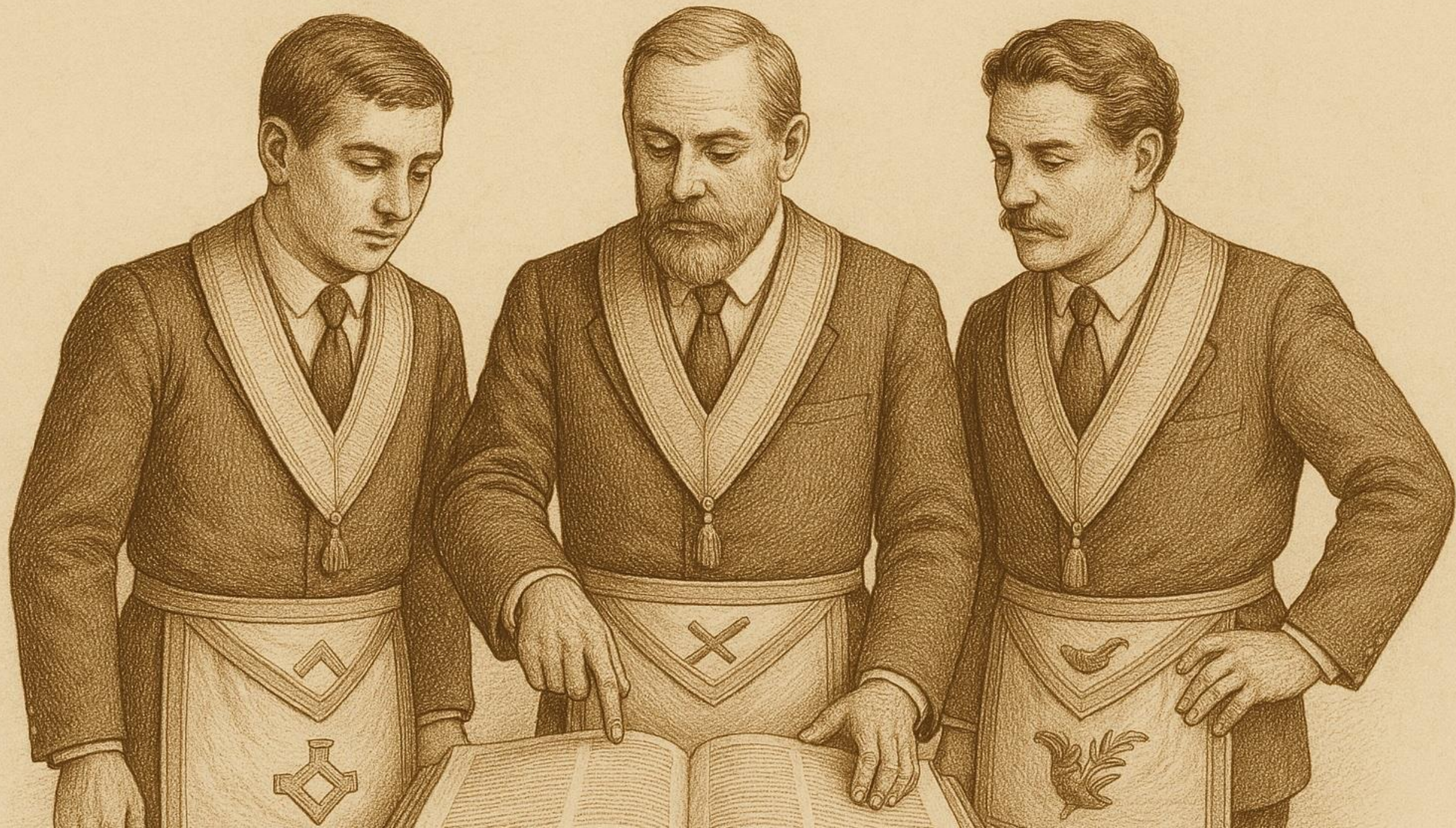
1. Use time wisely and efficiently.
2. Provide clear expectations and support on ritual memorization requirements.
3. Focus on harmony in the lodge. A lodge space is a sacred space. What does it mean to be the leader of a sacred space?

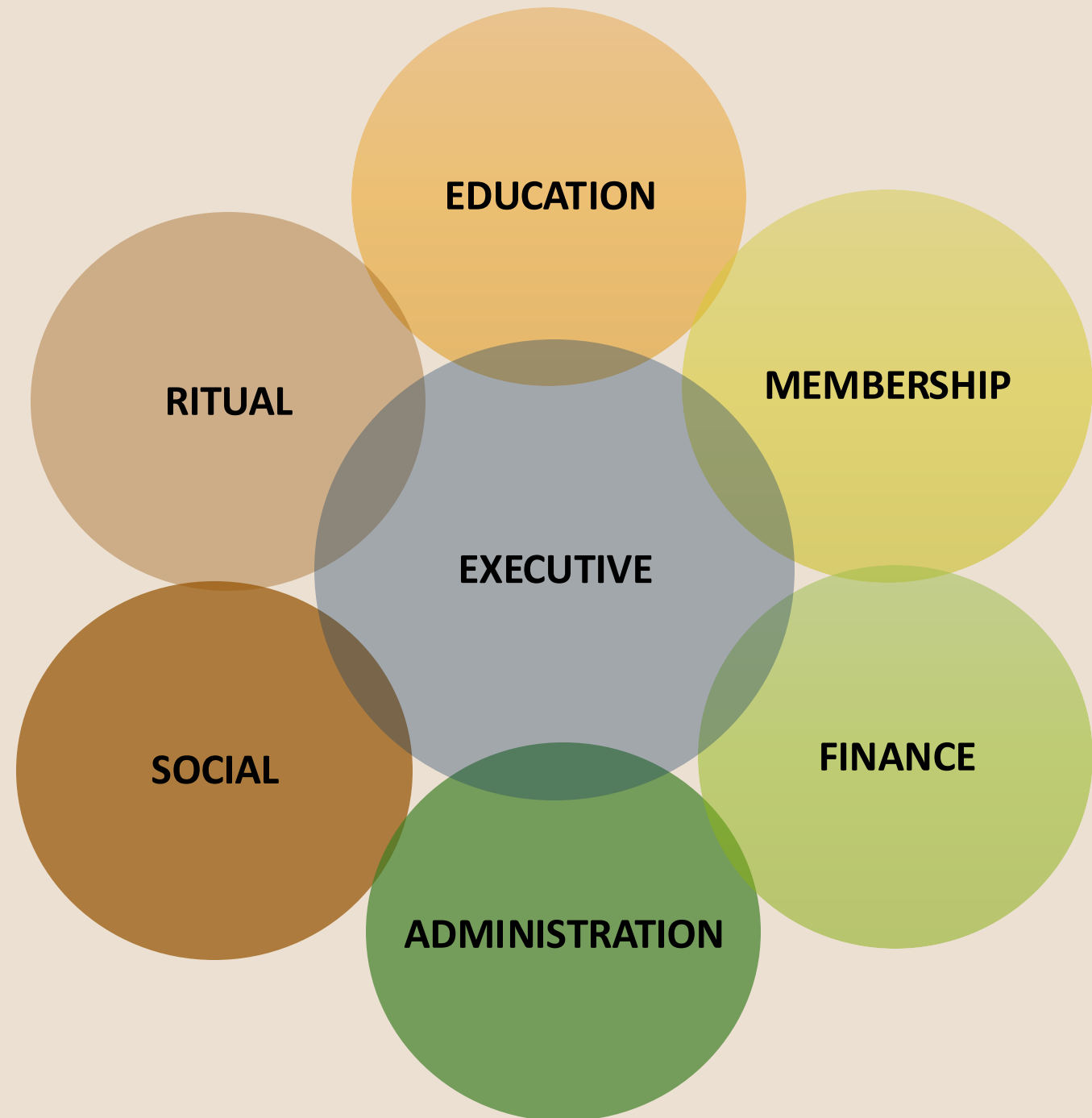
CLARIFYING LODGE FUNCTIONS AND OFFICER ROLES



A sepia-toned illustration of three men in academic regalia. The man on the left is a younger man looking down at a book. The man in the center is an older man with a beard, pointing at the book. The man on the right is a man with a mustache, looking at the book. They are all wearing gowns with different crests: a geometric cross on the left, a saltire on the center, and a plant on the right. The word "EXERCISE" is written in large, bold, yellow-outlined letters across the middle of the image.

EXERCISE

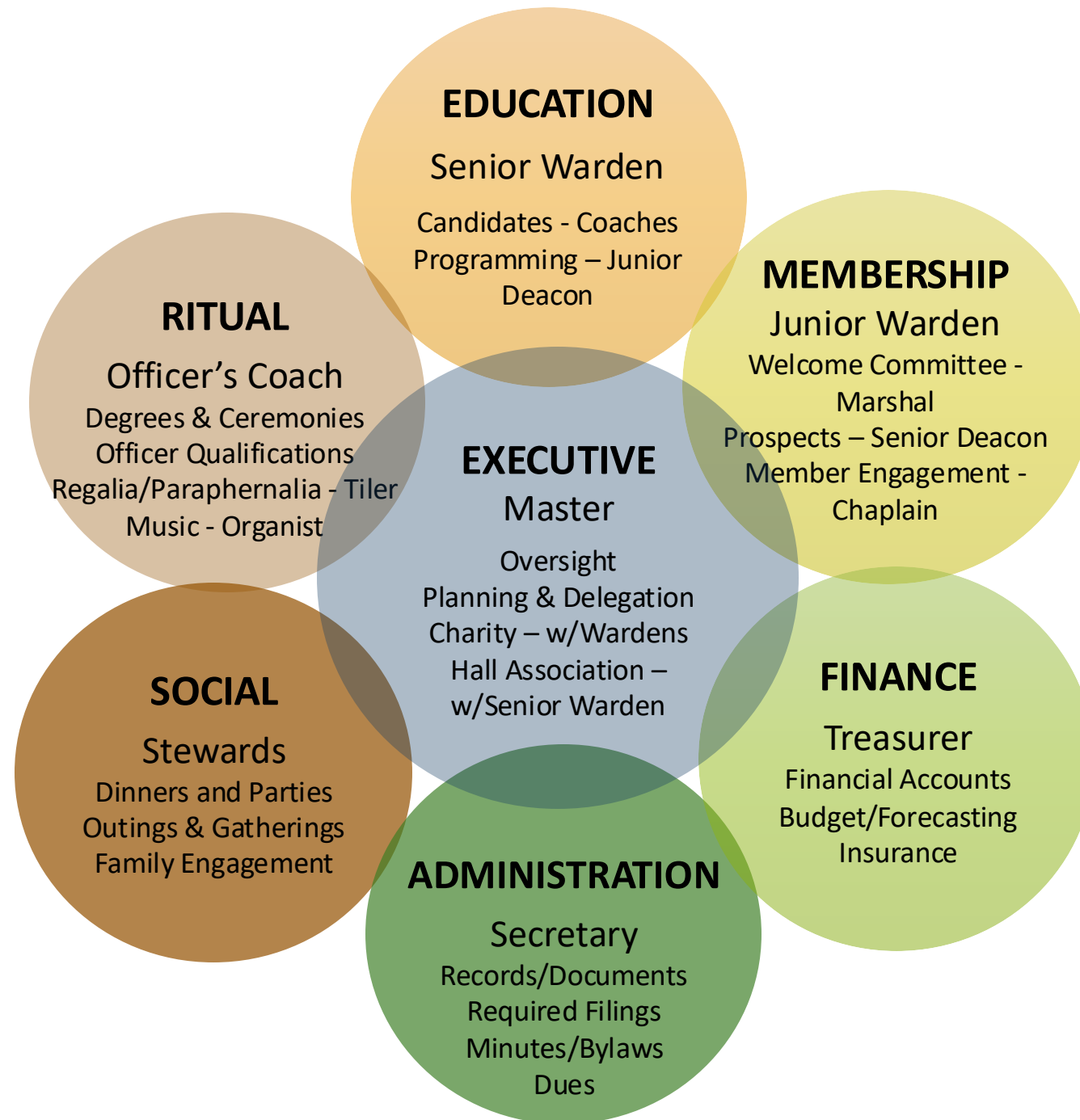








Success comes when every officer contributes





BEEHIVE IMPERATIVES

1. Show up!

2. Prioritize!

1.Culture

2.Effectiveness

3.Succession

3. Be the example!



Masons show their leadership is not just administrative, but moral and inspirational.

An illustration of a beehive in the center, surrounded by many bees. The beehive is a tiered, conical structure made of yellowish-brown material. It is framed by a dark, ornate wooden arch. Two large, dark wooden beams cross in an 'X' shape over the beehive. The background is a light, textured tan color.

LODGE OFFICERS

BUILDING A LODGE TOGETHER



INSPECTORS RETREAT 2025